



# BUTTE ENVIRONMENTAL COUNCIL'S ENVIRONMENTAL NEWS

Fall 2007

Volume 13 Number 3

## WATER AND DROUGHT



## CONSERVATION THE ANSWER, NOT MARKETING

### INSIDE THE ENVIRONMENTAL NEWS

Our Creeks and Park are Nearly 10,000 Lbs. Lighter	2	What is the Real Cost of Disc Golf in Upper Bidwell Park?	5	Protection of Local Ground Water Paramount!	7	Global cooling directory, Chico	12
Thank You to Our Clean-up Sponsors!	2	Wal-Mart Is Not a Done Deal	5	Court Petition Filed	7	A Mandate for Transportation Equity and Balance	13
BEC'S First International Member	3	BEC Opposes the return of the Peripheral Canal	6	Stormwater Pollution Prevention Campaign Comes to a Close	8	M & T Alert	14
The Aarhus Convention	3	First CSU Chico Greenie Awards	7	Toxics Awareness Grant	8	Recycling	15
Leave a Legacy	3	BEC Wins Non-Profit Category	7	Alternatives to Toxics	9	Environmental calendar	16
Creating a Solution Together	4	Water Facts	7	BEC Celebrates 32 years!	10 & 11	Environmental directory	18

## ENVIRONMENTAL NEWS

*Environmental News*, a quarterly published paper, covers environmental news and events of Butte County and beyond. To submit articles or events for the Environmental News and Calendar, e-mail [staff@becnet.org](mailto:staff@becnet.org). Articles should be submitted 30 days before publication and must include the author's name, address, and phone number. BEC reserves the right to edit work for space, clarity or libel. The opinions expressed by contributors are not necessarily those of BEC.

The *Environmental News* is a publication of the Butte Environmental Council, copyright 2007, all rights reserved. No part of this publication may be reproduced, stored in a retrieval system or transmitted in any form by any means—electronic, mechanical, photocopy, recording or otherwise—without the prior written permission of the publisher.

### About BEC

The Butte Environmental Council (BEC) is a not-for-profit public benefit corporation. Founded in 1975, BEC is devoted to environmental education and information, referral services, and advocacy.

#### BEC

116 W. Second St, #3, Chico, CA 95928  
530.891.6424, [www.becnet.org](http://www.becnet.org)

#### Office Hours

Monday through Thursday

9:30 A.M. to 5:00 P.M.

### How to Join BEC

To join BEC, just fill out the membership form on the back page of this paper.

### BEC Board of Directors

Jim Gregg, *Chair*  
Heather Schlaff, *Vice-Chair*  
Armeda Ferrini, *Secretary*  
Lynn Barris, *Emeritus*  
Nora Burnham, *Emeritus*  
Chuck Lundgren, *Emeritus*

### BEC Staff

Barbara Vlamis, *Executive Director*  
Maggi Barry, *Administrative Assistant*  
Mary Muchowski, *Education and Outreach Coordinator*

### BEC Technical Committee

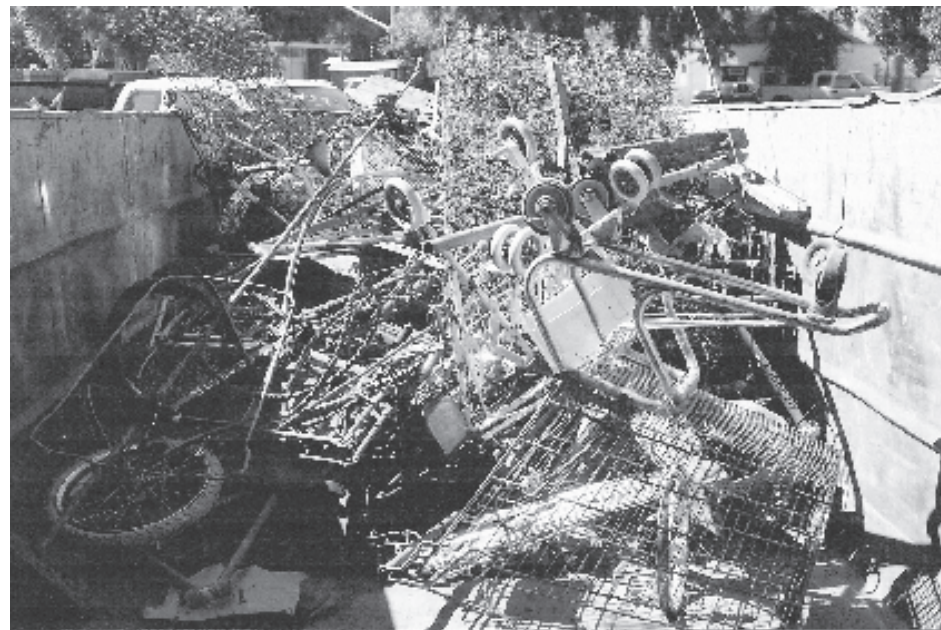
Lynn Barris, *Water Policy*  
Rachel Styer, *Newsletter Designer*  
James Brobeck, *Forestry, Ground Water*  
Peggy Gray, *Preservation Chair*  
Chuck Lundgren, *Computers, Website*

# BEC EVENTS

## Our Creeks and Park are Nearly 10,000 LBS. LIGHTER

Thanks to the energetic crowd of dedicated volunteers that spent Saturday, September 15th at Butte Environmental Council's Bidwell Park and Creeks of Chico Cleanup 2007, we removed nearly 10,000 lbs. of trash and recyclables from Bidwell Park and Comanche, Little Chico, Big Chico, and Sycamore Creeks, and Lindo Channel. We found refrigerators, mattresses, TVs, computers, car batteries, tires, and lots of glass beer bottles in our beautiful park and waterways. Nearly 150 volunteers toiled over four hours to make our wildlands healthy, enjoyable places for the community and our animal friends to dwell in.

We encourage you to strive to keep Bidwell Park and our all our waterways clean throughout the year, and since it continues to be necessary, to join your neighbors next fall when we return to host the Bidwell Park and Creeks of Chico Cleanup 2008. Hope to see you there!



(above) One of many dumpsters of scrap metal and other recyclables removed from Chico's downtown creeks.

## THANK YOU TO OUR CLEAN-UP SPONSORS!

BEC deeply appreciates the numerous sponsors, businesses and community groups that made the event possible: Butte County Public Works Dept., Birkenstocks, California Coastal Commission, California Conservation Corp, CAVE, Chico Food Network, Chico Beat, Chico Natural Foods Co-op, Chico News and Review, Chico Volkswagen, City of Chico, Cotton Party, CSU Chico's Rugby Team, CSU Chico's Phi Kappa Tau Fraternity, Cycle Sport, Ed's Printing, Enterprise Rent-a-car, Friends of Bidwell Park, Grilla Bites, Ital Imports, KZFR Radio, Left Coast Pizza, LuLu's, Mountain Sports, Mt. Shasta Spring Water, North Valley Waste Management, Parkview Market & Deli, Sierra Nevada Brewery, Torres Shelter, and Upper Crust Bakery.



# BEC'S First International Member

**Michael Stanley-Jones—One of BEC'S amazing members and colleagues**

Michael Stanley-Jones is the environmental affairs officer with the United Nations Economic Commission for Europe (UNECE) in Geneva, Switzerland. He serves with the secretariat to the UNECE Convention on Access to Information, Public Participation in Decision-making and Access to Justice in Environmental Matters, better known as the Aarhus Convention.

Michael manages the Aarhus Clearinghouse for Environmental Democracy, the global portal for information on the Aarhus Convention and principle 10 of the Rio Declaration on Environment and Development.

Before joining the United Nations, Michael worked with California's environmental community, including CLEAN South Bay, Silicon Valley Toxics Coalition and Clean Water Action. He served on the boards of Friends of the San Francisco Estuary, the Environmental Justice Coalition for Water and Silicon Valley Environmental Partnership.

From 2001-2003, Michael chaired the Santa Clara Basin Watershed Management Initiative. He helped launch the Initiative's Emerging Contaminants Workgroup, which pioneered public information on endocrine disrupting compounds and pharmaceuticals in California surface waters.

In the early 1990s, Michael was an organizer of the Danube Environmental Forum, an umbrella organization of NGOs whose membership later grew to include 174 organizations from 13 Danube riparian countries.

Michael has long-time ties to the Sacramento Valley and Delta region. He spent his childhood summers in Chico, Colusa, Dunsmuir, Durham, Fairfield and Oroville. Members of his family live in Chico and near

Paradise, or further afield in Oregon's Willamette Valley, Canton de Vaud, Switzerland, and the Rhône-Alpes region of France.

## The Aarhus Convention

The Protocol to the Aarhus Convention was signed in Kiev, Ukraine in May 2003.

The Protocol is the first legally binding international instrument on pollutant release and transfer registers. A pollutant release and transfer register (PRTR) is a national inventory of pollutant releases and transfers from industrial sites and other sources, similar in many aspects to the U.S. Toxics Release Inventory.

PRTRs contain information on pollutants from specific industrial sites and information on releases of certain pollutants to air, land and water considered to pose the most significant threats to environment or health. The Protocol covers releases and transfers of at least 86 pollutants, including greenhouse gases, acid rain pollutants, ozone-depleting substances, heavy metals, and certain carcinogens, such as dioxins.

PRTRs also contain information on waste which is transferred from one facility to a waste disposal site or recovery facility. PRTRs may also include information on pollution from other sources, such as pollution from traffic to air, from agriculture to water and from small polluting enterprises to land, water or air.

Through their national register, the public can search through the Internet for specific information related to companies, pollutant releases and transfers, geographical locations, etc. Such registers facilitate public participation in decision-making and contribute to the prevention and reduction of environmental pollution, as no company will want to be identified as among the biggest polluters.

Michael Stanley-Jones participated in the negotiation of the Kiev Protocol on PRTRs as the representative of the NGO Interactive Health Ecology Access Links (IHEAL) and the International Campaign for Responsible Technology, while cooperating with the Non-government Organization (NGO) umbrella coalition, European ECO Forum, and the U.S. EPA during 1999-2002 on negotiating positions and policies related to PRTRs.

Ultimately, U.S. NGOs failed to convince the U.S. Government to sign the Protocol on PRTRs, even though the U.S. had provided some financial support to processes leading up to, and participated constructively in, the early stages of the Protocol's negotiation.

One point of contention for both the U.S. and Canadian Governments was over the inclusion of facility-specific greenhouse gas emissions among the Protocol's reporting requirements. Legislation to include GHGs in the US Toxics Release Inventory has been introduced in the US Congress only this year, nearly four years after the Protocol's adoption at the Fifth "Environment for Europe" Ministerial Conference, in Kiev, Ukraine.

In 2004, Canada instituted a separate facility-specific reporting requirement for GHG emissions.

## Leave a Legacy

### For the Land, Air, Water, and Future Generations

A legacy gift to the Butte Environmental Council will not only ensure that some of our most beautiful and important resources in the northern Sacramento Valley and foothills are protected and preserved, but could also provide you with income for life, a reduction in capital gains taxes, and other benefits.

There are many ways that you can be a part of our environmental legacy:

- Remember BEC in your will or living trust
- Name BEC as a beneficiary of your IRA or Qualified Retirement Plan
- Name BEC as a beneficiary of a life insurance policy

If you currently have a will, you can easily add a codicil (an amendment) to include a bequest (a gift in your will) to BEC. An example of appropriate language for inclusion in your will or living trust is:

"I give, devise and bequeath to Butte Environmental Council, a California nonprofit public benefit corporation with the mailing address of 116 West Second Street, Suite 3, Chico, California, 95928, the sum of \$ \_\_\_\_\_ dollars [or otherwise describe the gift or asset] for its general purposes and use at the discretion of Butte Environmental Council's Board of Directors."

If you are interested, please contact your personal financial planner or attorney. For basic information, please contact Butte Environmental Council at 530.891.6424.

## DISC GOLF Creating a Solution Together

BEC's advocacy and education for the protection of wildlands in Butte County and the region is unparalleled. The Ishi Wilderness was launched by BEC, the *No Way San Jose* campaign emanated from our office, 900,000 acres of vernal pool critical habitat have been designated from BEC litigation, and 1,500 acres of wetland habitat in Chico were acquired due to BEC's ideas, collaboration, and reputation.

At this time, it seems we are being called on to take a position on something smaller in scale that we thought others could resolve: a location for a disc golf course. The City of Chico acquired the property that is currently used for disc golf in 1995. Disc golf was already taking place in what became an extension of Upper Park. As disc golf grew in popularity, the course off SR 32 was used more heavily and has resulted in some profound impacts to wildflowers and rare plants (Belchik 2005). Illegal dumping has also significantly impacted the land that is adjacent to SR 32, as BEC well knows from our Bidwell Park Cleanups.

To facilitate more understanding of the issues relating to this part of Upper Park, BEC organized a tour of the disc golf course on June 20, 2007 to hear arguments from the opponents and proponents of the site and to see the facts on the ground. Four of us, representing different groups, walked the site and had a candid discussion. At the conclusion of the tour, it was clear that BEC could support a great deal of what was deliberated that day:

- Look for a disc golf location with the urban core of the City and support it.
- Restore the Upper Park site to a more healthy state no matter what its end use will be.

- Have the City, conservationists, and the disc golfers that love the Upper Park prioritize maintenance of a restored site.
- If these steps are not acceptable, the City should hire a mediator to resolve the issues.

As a leader in community cleanups, BEC sees first hand the results of unlimited public access in wildlands. The disc golf site in Upper Park is no different, requiring extensive and regular removal of trash and the degradation of natural ecosystems from illegal littering and dumping as well as recreation. There are undoubtedly many players of the disc golf game who do not litter and take pains to clean after others. The illegal dumping actually appears to have diminished with more activity by the City and recreationists in the area. Unfortunately, as most people realize, it only takes a few individuals to damage an area and an inordinate amount of labor to clean and restore it. For example, even with regular maintenance and trash removal by City staff and volunteers in Bidwell Park, between 1,000 and 2,000 lbs. of trash are removed from lower Park and the swimming holes in upper Park during BEC's fall cleanup (see p. 2 for details).

Our local, state, and national parks are treasures for all of us to share, and being in them is crucial to understanding that ethic. Naturalist Robert Michael Pyle aptly wondered, "What is the extinction of a condor to a child who has never seen a wren." BEC encourages exploration of what remains of California's wildlands with the kind of hands you would use with your children and grandchildren – taking the long, gentle view. While so much of all our lives has been influenced by the fast pace of modern capitalist economies,

shortening our perceptions of "now" and "future" into days and a sometimes a year, Stewart Brand suggests that one area where humans take a longer view is when planning infrastructure (e.g. parks, roads, schools, etc.) Our natural "infrastructure" takes even longer, so "Lucky for us, we don't have to build the atmosphere that sustains us, the soils, the aquifers, the wild fisheries, the forests, the rich biological complexity that keeps the whole thing resilient. All we have to do is defend these systems – from ourselves," Brand asserts.

Surely we can find a solution together within Chico's core that would lighten our carbon and ecological footprints, open up a recreational opportunity for more residents of all ages, and restore a more remote Upper Park ecosystem for less intense recreation. The challenge lies before us.

*For more opinions see page 5 and the previous issue of the EN at [www.becnet.org](http://www.becnet.org).*

### The Chico Beat



**Your favorite locally owned newspaper.**

**Visit us online  
[www.chicobeat.com](http://www.chicobeat.com)**

## Wal-Mart Is Not a Done Deal

By Heather Schlaff  
*Chico Advocates for a Responsible Economy*

We recently notified supporters that hearings on the proposed south and north Wal-Marts would be scheduled by November. However, the process has slowed again. The latest information from the Planning Department is that the final Environmental Impact Report (EIR) for the south site expansion will not be completed until the end of the year, with the north site to follow.

This excruciatingly slow process has tested our patience since it began in February 2004. It is difficult to maintain public awareness and interest when the issue disappears from view for such extended periods. However, Chico Advocates for a Responsible Economy (CARE) continues to monitor progress on both sites, and will be ready to act in opposition as the final EIRs are published and come before the Planning Commission and City Council.

When the EIRs are published we will need everyone who believes in sustaining local businesses and maintaining Chico's quality of life to participate by contacting City Council members and Planning Commissioners, and writing letters to the editor opposing both proposed Wal-Marts. One Wal-Mart is more than enough! We do not oppose the existing Wal-Mart, but Chico does not need a Supercenter.

To learn more about the issue please visit our website, [Chicocares.org](http://Chicocares.org). Click on "Join us" to receive updates on the process. Any questions you have may be addressed by emailing us at [info@chicocares.org](mailto:info@chicocares.org). Wal-Mart's expansion in Chico is not a "done deal." Decisions will be made only after public hearings have been held.

# What is the Real Cost of Disc Golf in Upper Bidwell Park?

By Susan Mason  
*Friends of Bidwell Park*

Because Chico has been discussing significant budget shortfalls, we should also discuss the fiscal irresponsibility that's being foisted on the citizens of Chico by the project proponents of two 18-hole disc golf courses in Upper Bidwell Park.

Several years ago, a small group of disc golfers decided they wanted to build their own courses on 40 acres of public property and proceeded to do so illegally without any environmental review or formal permission. Regrettably, the City subsequently agreed to allow them to play there pending the outcome of required environmental review.

First there were the initial environmental reports. Three versions filled with significant errors and omissions (e.g. there were no rare plants reported for the site and no impacts to the Humboldt Road and ancient oak trees were mentioned). How much did Chico spend for consultants to do the original surveys? How much was spent for staff time to write these reports?

Then there is the update to the Bidwell Park Master Management Plan (MMP), which has been dominated by disc golf discussions. How much have the disc golfers cost the City for their arborist report, botany surveys, wildlife surveys and their re-design of the courses to avoid rare plants? In addition to money given directly to the consultants to analyze the impacts of disc golf, how much money has been spent of City staff time for endless meetings revolving around disc golf? Now the City reports that there are so many comments regarding the deficiencies and inaccuracies in the Draft MMP and

Environmental Impact Report (EIR) that they need even more money to proceed.

If the City officially approves disc golf at this location, what would the capital project costs be? How much to build a turn-out lane and/or a turn-in lane on Hwy 32 if required by Caltrans? How much will it cost to design and build the driveway and parking lot? How much to buy and install an access gate, 36 concrete pads and baskets, an unknown distance of rock lined trails, benches, trashcans and the bathrooms?

How much will it cost to provide mitigation for the significant impacts identified in the EIR? How much money for the "tree guards" to reduce damage to the blue oak trees? How much will cost to buy and install the still undetermined amount of mulch required to reduce soil compaction over the undetermined amount of acres? How much to monitor the area's blue oaks and rare plants for ongoing damage?

What will be the ongoing cost to maintain the remote disc golf courses? How much staff time and expense will it cost to open and close the new gate

twice daily, ranger patrols, service the portable toilets, empty the trashcans?

Allowing disc golf courses to be built in Upper Park is not only significantly damaging the environment (see [www.friendsofbidwellpark.org](http://www.friendsofbidwellpark.org) for more information); it is also costing the taxpayers a fortune. The City needs to find an alternate site in Chico (perhaps in Middle Park) and build an accessible and sustainable, single 18-hole course suitable for everyone's enjoyment.



[www.shocking.com](http://www.shocking.com)

**shocking.com**  
1.888.860.1300

Dial up access, hosting, colocation, domain services,  
and more. Fast and friendly customer service.



# WATER

## BEC Opposes the return of the Peripheral Canal

The hub of California's water transfer system is the Sacramento-San Joaquin Delta. The Feather, Yuba, and Sacramento Watersheds are the area of origin for the most significant water currently in this system. But the state wants more water. The Oroville, Bullards Bar, and Shasta Dams were constructed in the most feasible locations for reservoir operation during an era that did not have wise environmental constraints in place. New reservoirs would be more expensive, less effective and strictly illegal under modern environmental regulations.

Due to these limitations, Sacramento Valley aquifer complexes are being closely examined as a new source of water for the state water market. But the hub of the water marketplace, the Delta, is precariously tilting out of balance threatening the ecosystem, Delta agriculture, and the reliability of deliveries to distant farms and communities that have been lured into dependency on this unsustainable water supply strategy.

In May 2007 an alliance of conservation and sport fishing groups filed a lawsuit to reduce pumping operations drawing water from the Delta based on scientific findings indicating a catastrophic collapse of the ecosystem resulting in near extinction of the once common Delta Smelt. Unable to deny the facts and the court's opinions, the state is scrambling to reopen the Peripheral Canal discussion. The proposed "isolated conveyance" canal would tap the Sacramento River a few miles upstream from the existing pumps. The state is promoting the idea in current bond discussions and public relations events. One such event was hosted by the acting director of Butte County Department of Water and Resource Conservation in Colusa on

October 10th 2007. A group of panelists dominated by water contractor interests presented dubious information praising the feasibility of the Peripheral Canal that might allow them to temporarily transfer their water entitlements to buyers south of the Delta. BEC provided the sole voice on the panel encouraging the state to embark on critical water conservation, recycling and watershed restoration projects to meet demand.

### **BEC defends the groundwater in court**

As California water purveyors cast their gaze into Northern California looking for new sources of water to irrigate urban sprawl south of Sacramento their focus is narrowing on the aquifer system that underlies the Sacramento Valley. The Sacramento Valley Integrated Regional Water Management Plan, created by irrigation district lobbyists, places considerable emphasis on "conjunctive use" of the aquifer complex; selling entitlements to diverted river water and irrigating the rice fields with groundwater pulled from the Tuscan formation. Groundwater dependent agriculture, individuals, environmentalists, and Chico city leaders are opposing the strategy that is likely to drain the water from under the eastern edge of the valley.

BEC is demanding environmental review of the plan to integrate our groundwater into the state water supply before any new drilling projects initiate "conjunctive use" activities. But during the summer, the Glenn Colusa Irrigation District (GCID), working with the California Department of Water Resources (DWR), filed a flimsy public notice document claiming that installation of seven huge extraction wells planned later this year is exempt from detailed environmental review. GCID claimed that these wells would



*Sacramento River*

only be used to measure the aquifer's response to heavy evacuation would have no negative impacts to the environment. BEC filed a lawsuit in September 2007 challenging this rationale.

GCID is using public tax money to expand its role in water marketing. The "test well" project is part of a much larger set of plans to "integrate" ground water into the state water supply. GCID has been pursuing these plans for many years. While speculators are allowed to propose myriad types of projects in California, the law requires that they analyze the potential impacts and mitigate them through the California Environmental Quality Act (CEQA). BEC's Executive Director, Barbara Vlamis, concludes that, "GCID chose to skirt the hard analysis required by the California Environmental Quality Act by trying to assert that it is only seeking information from a research project, completely obfuscating its focus on

water exports as noted in numerous documents."

GCID's proposed project will extract a volume of ground water that approaches or exceeds the current utilization by the city of Chico, creating the likelihood of a significant adverse environmental impact. BEC requests that the Glenn County Superior Court require the preparation of an environmental impact report by a more appropriate lead agency and that all activities surrounding the project are halted.

BEC is devoting considerable funds and staff time to legally challenge this scheme to capitalize on a vital public resource that is the foundation of our regional quality of life. BEC will continue to attend official meetings throughout the state to represent the people and the environment that depend on a healthy aquifer system.

## Breaking News!

BEC's litigation with Glenn Colusa Irrigation District has been an unqualified success! GCID has withdrawn the exemption they used to circumvent environmental review. We know that this is just the first of many rounds to come, but BEC will be watching. Please support BEC's litigation efforts on your behalf by joining BEC or increasing your donation. Individual members are what make all this happen!

[www.becnet.org](http://www.becnet.org)



## First CSU Chico Greenie Awards BEC WINS NON-PROFIT CATEGORY

The *Way to Sustainability III* conference was held November 1-4, 2007 at CSU Chico, the largest sustainability conference of its kind in the United States. Added to the conference this year was the presentation of Chico's first "Greenies" awards, which were given to the local individual, nonprofit, and business organization that did the most for sustainable development in the current year. CSU, Chico President Paul Zingg and Butte College President Diana Van Der Ploeg presented the awards. Ken Grossman was given the individual award. He is the owner of Sierra Nevada Brewery, the most progressive and generous business in Butte County, and he also participates actively in local business, environmental, and social projects. Lundberg Family Farms was the recipient of the Greenie business award for their organic farming enterprise on 15,000 acres of land.

To our surprise, Butte Environmental Council was selected as the Greenie nonprofit. While BEC's work and 32 years of service has contributed significantly to the health and well being of the local environment and residents, BEC has frequently been viewed and treated as radical and outside the accepted main stream. Receiving the Greenie was further proof that BEC's advocacy and education are becoming accepted in the general population. To illustrate another example, BEC's innovative, small, recycling center in the 70s and 80s, which was viewed as a hippy endeavor, proved to be at the forefront of a movement that propelled recycling into big business and state mandates.

BEC's Executive Director for 16 years, Barbara Vlamis, accepted the award on behalf of BEC's 800 members by thanking the two college presidents, Scott McNall (host of the conference), and the community that has supported 32 years of BEC activism.

## Water Facts

- The vast majority (87%) of Butte County residents depend on ground water for their drinking water.
- The Tuscan Formation aquifer, which underlies Butte, Glenn, and Tehama counties holds approximately 30 million acre feet (AF) of water (an acre foot is 325,900 gallons of water).
- Los Angeles' Metropolitan Water District is looking for 300,000 AF from the Sacramento Valley by 2010 and 550,000 AF by 2020.
- Glenn Colusa Irrigation District and its partners have been funded by the State of California to explore selling ground water from the aquifer.
- In 1994, 105,000 acre-feet of water were sold from Butte County. Individual wells ran dry, one Durham community well was forced to close, hoses ran between neighbors' houses for water emergencies, people unwittingly drank polluted water before their wells dried up, and one family lost part of their farm from the impacts.
- There is currently no real protection for Butte County's ground water.
- The San Joaquin River is already dewatered in its upper reaches from excess water consumption and a significant portion of the San Joaquin ground water basin has been subsiding.
- The amount of energy currently devoted to pumping water over the Tehachapi mountain range from northern to southern California is equal to one third of the entire household energy use of southern California.

## Protection of Local Ground Water Paramount! COURT PETITION FILED NOVEMBER 2, 2007

Butte Environmental Council (BEC) has challenged Butte County's approval of the Sacramento Valley Integrated Regional Water Management Plan (Plan), which did not provide the necessary environmental assessment of its impacts. The Plan was created in nine months with extremely limited public involvement in an attempt to secure funding for 60 production wells that will extract water from the lower Tuscan aquifer to meet water demands elsewhere. The Plan also supports raising Shasta dam and building Sites Reservoir in Colusa County.

When the County passed their approval May 22, 2007, so they could receive funding for two production wells and repairs for the Magalia dam, they tempered their approval with numerous caveats through which they asserted their intent to preserve the integrity of the groundwater resources of the County. While expressing concern, the Supervisors gave no indication that such caveats will, or have been, incorporated into the contractual framework governing the receipt and use of the funding. The County's approval of the Plan sets in motion efforts to utilize massive quantities of local groundwater for the state water supply. While speculators are allowed to propose myriad types of projects in California, the law requires that they analyze the potential impacts and mitigate them through the California Environmental Quality Act. Barbara Vlamis, BEC's Executive Director asserts that, "Butte County is participating in a Plan that could destroy the local economy and environment and has avoided the environmental review that would at least lay bare the consequences and allow for intense public input." Stay tuned as the litigation moves forward!



# EDUCATION

## Stormwater Pollution Prevention Campaign Comes to a Close



The Chico Urban Streams Alliance has completed work on the two-year grant with a very successful program. The partners of CUSA hope to continue the effective education of Chico residents about the problems associated with stormwater runoff pollution and the easy steps they can take to prevent the pollution of our beautiful streams. Dr. Diane Schmidt from Chico State prepared a complete analysis of the data collected during the final project telephone survey, and the results show that the CUSA partners were extremely successful in educating the people of Chico about stormwater pollution prevention. The storm drain marking events seemed to be the foremost item that stuck in the mind of most Chico residents when asked what they had heard, saw or read about this campaign.

### About the Campaign:

Household and business-generated polluted runoff in the urban area of Chico is a significant contributor to the overall water pollution problem in Chico creeks and streams. Pollutants, such as nutrients from garden fertilizers, pesticides, herbicides and animal wastes – and behaviors, such as the improper

disposal of cigarettes, trash, and toxic chemicals such as motor oil and anti-freeze – are negatively affecting the city's water quality. In order to address these water pollution issues the Chico USA EOP was developed to convey educational messages to watershed residents and businesses about runoff pollution problems and solutions. Major goals were to: (1) instill public awareness and knowledge of runoff pollution prevention Best Management Practices (BMPs); (2) change public behavior consistent with educational messages; and (3) foster support for future water quality protection EOP efforts.

### Future Plans:

There are plans in the works to continue the mission of ChicoUSA. The current partners of ChicoUSA include: the City of Chico; the Butte Environmental Council (BEC); the Big Chico Creek Watershed Alliance (BCCWA); and Kennedy/Jenks Consultants. BEC hopes to continue this successful outreach program with the aid of the other partners and potentially new partners, so that we can do our part in keeping pollution out of Chico's beautiful creeks.

## Toxics Awareness Grant

Work continues on the three-year grant BEC received from The California Wellness Foundation. One of the projects currently on the table is the development of a questionnaire for a county-wide survey to determine the "toxic awareness" of Butte County citizens. The survey is slated to take place next spring.

Jennifer Oman has developed a curriculum focusing on interactive activities to educate elementary school students, and began toxic awareness education in classrooms last spring. We will continue these programs for 3rd and 5th grade classes in Oroville, Chico, Gridley and Hamilton City this school year.

Although this grant covers a huge umbrella of topics under the label "toxic awareness", we will be concentrating our education and outreach efforts on:

- Alternatives to Toxics
- Toxics in/on our Food
- Toxics in our Homes
- Toxics used for our Automobiles
- Toxics in our Drinking Water

If you would like to become involved with this project, please contact Mary at [marym@becnet.org](mailto:marym@becnet.org).



## Alternatives to Toxics

U.S. Lagging Behind...

There are 81,600 chemicals registered in the United States as a result of the Toxic Substances Control Act of 1976. How does this concern you? A nationwide EPA study (conducted in 1987) found nearly 700 chemicals in Americans. Yep, that's you and me. Some of these chemicals are accumulating in our bodies, whether we like it or not. Toxins are being passed from mother to fetus "in utero" as well as to infants in the breast milk, so we are loaded with toxins before we can even reach for the bottle of drain cleaner.

Many of these chemicals are in our homes: in our carpets, furniture, household cleaners and cosmetics, so it seems that the best "alternative to toxics" is to stop producing them. On June 1, 2007 the European Union initiated its REACH (Registration, Evaluation, Authorization and Restriction of Chemical Substances) program, which will require producers to register the most widely used chemicals. This progressive, groundbreaking program will also place restrictions (or even "all-out" bans) on the use of approximately 1,400 chemicals.

In our current system, the EPA is required to prove that a chemical is toxic enough for removal, before it can impose any restrictions on that chemical. In the new REACH system, the European Union is going to start with the removal of the 1,400 "chemicals of very high concern" and the producers will have to "bear the burden of proof" to gain approval to use that chemical.

In its American-based manufacturing facilities, a German company will continue to produce and use a chemical, (one of the phthalates, see sidebar) in products that are to be sold in the United States, even though it was banned overseas in 2006. This company already

makes products without phthalates for the European Union, however will probably continue to use phthalates here until the U.S. wakes up and creates a similar program to REACH.

In another example, the European Union has banned the use of over 1,000 chemicals used in cosmetics, yet the U.S. Food & Drug Administration bans only nine chemicals from cosmetic ingredients. Several cosmetic companies also include phthalates (sometimes hidden under the vague label of "fragrance") in their products such as fingernail polish and perfume. Of course, all of these cosmetics companies will have to comply with the new REACH regulations in Europe, but many will still use the old formulas for sale in America.

Is there hope? I believe so. During my research for this article I came upon an interesting report called Green Chemistry in California, published in 2006.

Green Chemistry...

the wave of the future?

According to the authors of Green Chemistry in California, "green chemistry products are less toxic, they do not accumulate in the body, and they break down more readily in the environment. Green chemistry processes use safer materials and less energy and produce less hazardous waste." Sounds great! The report also mentions that the REACH program is already encouraging green chemistry, and that it is one of the top 10 technology-setting trends in the Silicon Valley.

So, I believe there is hope. I also, personally, hope that California will lead the way.

### Green chemistry

The design, development, and implementation of chemical processes and manufactured products that are intended to reduce or eliminate substances hazardous to human health and the environment.

### For more information

*California Green Chemistry Report*

[www.chemicalspolicy.org/downloads/CAGreenChemistryReport.pdf](http://www.chemicalspolicy.org/downloads/CAGreenChemistryReport.pdf)

*REACH*

[http://ec.europa.eu/environment/chemicals/reach/reach\\_intro.htm](http://ec.europa.eu/environment/chemicals/reach/reach_intro.htm)

### Phthalates

A group of chemicals known as the "plasticizers" used most often in cosmetics, but also in toys and other products such as vinyl flooring and shower cutrains. They can cause liver, kidney and reproductive problems.

*"Given California's unparalleled capacity for innovation and its scientific, technical, and financial resources, a proactive response to these developments in the form of a modern, comprehensive chemicals policy could position California to become a global leader in green chemistry innovation."*

*Michael P. Wilson with Daniel A. Chia and Bryan C. Ehlers*  
Green Chemistry in California: A Framework for Leadership in  
Chemicals Policy and Innovation (2006)

# BEC CELEBRATES 32 YEARS!



## BECKoned by the wild.

For the last 32 years Butte Environmental Council has been at the forefront of environmental issues as a watchdog and advocate for clean air, water and land in Butte, Glenn and Tehama Counties. BEC has led the annual Bidwell Park and Creeks of Chico Cleanups for 20 years. We continue to educate the community through the events such as the annual Endangered Species Faire, the longest-running environmental fair in northern California.

# Action

for the land, air, and water

[www.becnet.org](http://www.becnet.org) | 530.891.6424





# BEC CELEBRATES 32 YEARS!

## BECause Water Is Life

PROTECTING NORTH VALLEY AND FOOTHILLS GROUND WATER RESOURCES

A Campaign of  
Butte Environmental Council



BEC is focusing its attention on protecting Northern California's water supply, focusing on current major threats to export additional surface and ground water to fuel Southern California sprawl. BEC's ground water work began in 1995. In the face of a 400,000 acre foot water grab by the Department of Water Resources, we immediately began collaborating with local family farmers, activists in Yolo County, and conservative politicians, which enabled us to defeat this water grab that same year. More recently, we have been working closely with prominent statewide organizations such as the Environmental Water Caucus and have just successfully sued the Glenn Colusa Irrigation over their accelerating efforts to exploit the ground water under Butte, Glenn, and Tehama counties! Stay tuned for more on this success!



### *BECause Water Is Life • BEC Membership*

#### *I am not yet a BEC Member*

YES! I would like to become a BEC Member:

- ☐ \$25 individual membership
- ☐ \$50 family membership
- ☐ \$100

- ☐ Check made payable to BEC, enclosed
- ☐ Electronic funds transfer (in your packet)
- ☐ Charge my credit card \_\_\_\_\_  
Expiration \_\_\_\_\_

Name \_\_\_\_\_

Address \_\_\_\_\_

\_\_\_\_\_ Phone \_\_\_\_\_

E-mail \_\_\_\_\_

#### *I am already a BEC Member*

- 1) If it has been a couple of years since you increased your donation, please consider increasing your annual, monthly or quarterly gift.
- 2) Recruit a new Angel! For each new Angel, you will receive two cobalt blue goblets etched with BEC's Angel emblem.

- ☐ I would like to increase my membership donation to \$ \_\_\_\_\_ per year/per month/per quarter.
- ☐ I am increasing my Angel membership for \$ \_\_\_\_\_ per month/quarter.
- ☐ I have recruited a new BEC Angel: \_\_\_\_\_
- ☐ My check payable to BEC is enclosed.
- ☐ Add this to my electronic fund transfer agreement.
- ☐ Charge my credit card \_\_\_\_\_

**Butte Environmental Council • 116 West Second Street, Suite 3 • Chico, California, 95928 • 891-6424 • becnet.org**

# EDUCATION

# ChicoEco.org

## A global cooling directory for Chico

By Nani Teves

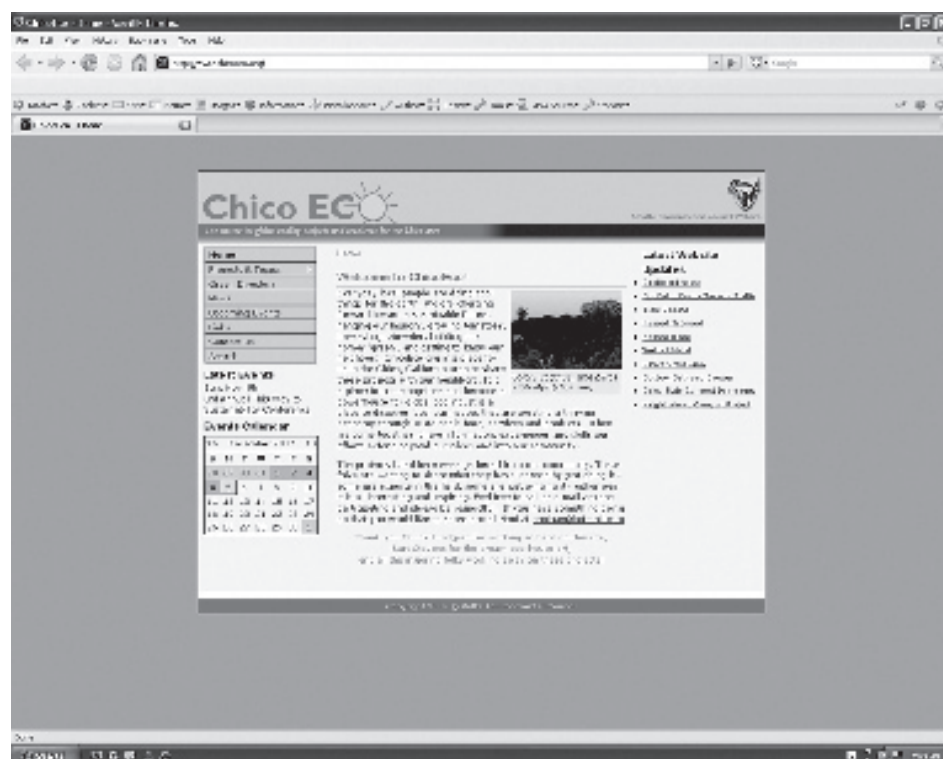
Al Gore's global warming movie, *An Inconvenient Truth*, was still fresh in my mind. I had just returned from the Solar Living Center in Hopland, a place where everywhere you look there is an inspirational, working, sustainable home or garden project. And it was during the third nap time in a row for my two kids that I continued to unsuccessfully search for local solar hot water heating information, and a non-toxic ant control service. I was already overwhelmed and hadn't even begun to lighten my global footprint. What I was hoping for was some sort of green directory for Chico or example house, and although we didn't have these, I knew individuals were pushing forward. I knew just from walking around town, people were growing vegetables, installing solar panels, hanging laundry, building sustainable houses. And hadn't I heard of a taxi-cab that ran on vegetable oil, a landscaping company that implements water conservation practices, and even an EcoBroker?

It was here that ChicoEco.org was born, from the need to unite and share these resources to make it easier to learn from each other and get in-touch with local businesses determined to provide a more environmentally friendly alternative. Not wanting to reinvent the wheel, I contacted and was encouraged by Butte Environmental Council (BEC), a natural partner for ChicoEco.org as they are already

the local environmental umbrella organization and have the tools to make this successful.

While gathering projects and business, by talking to friends of friends, I could not believe the resources we have in our community, the work that has already been done, and the innovation going on. I learned about a Structural Insulated Panel (SIP) home that is super insulated and uses fewer resources to build, and a house built entirely from resources salvaged from the landfill. I learned that an upturned futon frame makes a great trellis, and that broken cement can be stacked and used as a raised garden.

Chico is charging forward toward a path of sustainable living and ChicoEco.org is a place to unite this information and become a powerhouse for global cooling locally. ChicoEco.org highlights over 25 eco projects, provides a directory of more than 40 green businesses, and has an Action Events calendar that gives you an opportunity to get involved in activities ranging from vegetable swaps to pulling invasive weeds. ChicoEco.org is just up and we know there is so much more out there, so check out the site, look often for updates, and participate by including your own eco-project or green business.



**Complicated problem:**  
**GLOBAL WARMING**

**Simple Solution:**



**PULLINS  
CYCLERY**

**801 Main St., Chico**  
**(630) 342-1066**  
**[pullinsusa@aol.com](mailto:pullinsusa@aol.com)**



# TRANSPORTATION

## A Mandate for Transportation Equity and Balance

By Donna J. Cook

### BALANCE

Butte County is mandated to provide a balanced transportation system that meets the needs of all people. That is not what we now have. A balanced system would provide access to travel for children too young to drive, people unable to drive, those who can't afford a car, and others who choose not to drive or are not allowed to drive, as well as for drivers. People with cars can travel with relative ease throughout the city and county.

When I drive my car, I am able to drive anywhere in Chico without any physical discomfort or inconvenience (except for an occasional road project!). When I ride my bicycle, which I try to do most of the time, I frequently have to go north to get south to find a safe route. That is not balanced." When my grandson leaves school, he needs to walk into the street to get around parked cars where the sidewalk is missing. Not a safe route from school. When the bus has no space for a young man in a wheelchair, he needs to sit in the rain for an hour. Not a reasonable means of transportation. When a Paradise commuter can't put his bike on the last bus to Paradise because it's full, there are no public lockers available for him to store his bicycle in Chico. Not an encouragement to cycling. A balanced system would provide for transit users, pedestrians, people in wheelchairs, and bicyclists as well as for cars and trucks.

How do we get a more balanced system?

### EQUITY

One of the major sources of funding for meeting the transportation needs of "the poor, the handicapped and those of limited means" is the Transportation Development Act of 1971 (TDA). When this act was passed, equity was

the primary issue. If equity exists, a more balanced transportation system is available to everyone.

Most TDA funds are used for B-Line and paratransit services in Butte County. The cost is divided between the cities and towns of Butte County. What is left must first be spent for "unmet transit needs that are reasonable to meet," a legal process conducted by the Butte County Association of Governments, our regional transportation planning agency. This definition is currently a narrow one that excludes bus shelters and signage; bicycle lockers, racks and lanes; and sidewalks.

The balance of TDA money is returned to the cities and towns to spend according to TDA guidelines. Chico has spent and is planning to spend most of this on streets and roads. This is not illegal, but it is not balanced since there are other funds for street and roads. The majority of TDA money could be spent for well-lit transit shelters, transit signage, bicycle racks and lockers, bicycle routes and lanes, sidewalks, or other transit needs like Sunday transit or perhaps a rideshare program. Chico receives gas taxes and transportation funds for streets and roads. Those funds should be used, rather than taking from a fund intended to create equity.

Are these reasonable expectations? Chico's city council has committed itself to "meet or beat the target of reducing global warming pollution levels to 7% below 1990 levels by 2012," by taking local actions to "promote transportation options such as bicycle trails" and to "create a walkable urban community. . . ." (U.S. Mayors Climate Protection Agreement) This would appear to put the city council squarely behind a balanced transportation system.

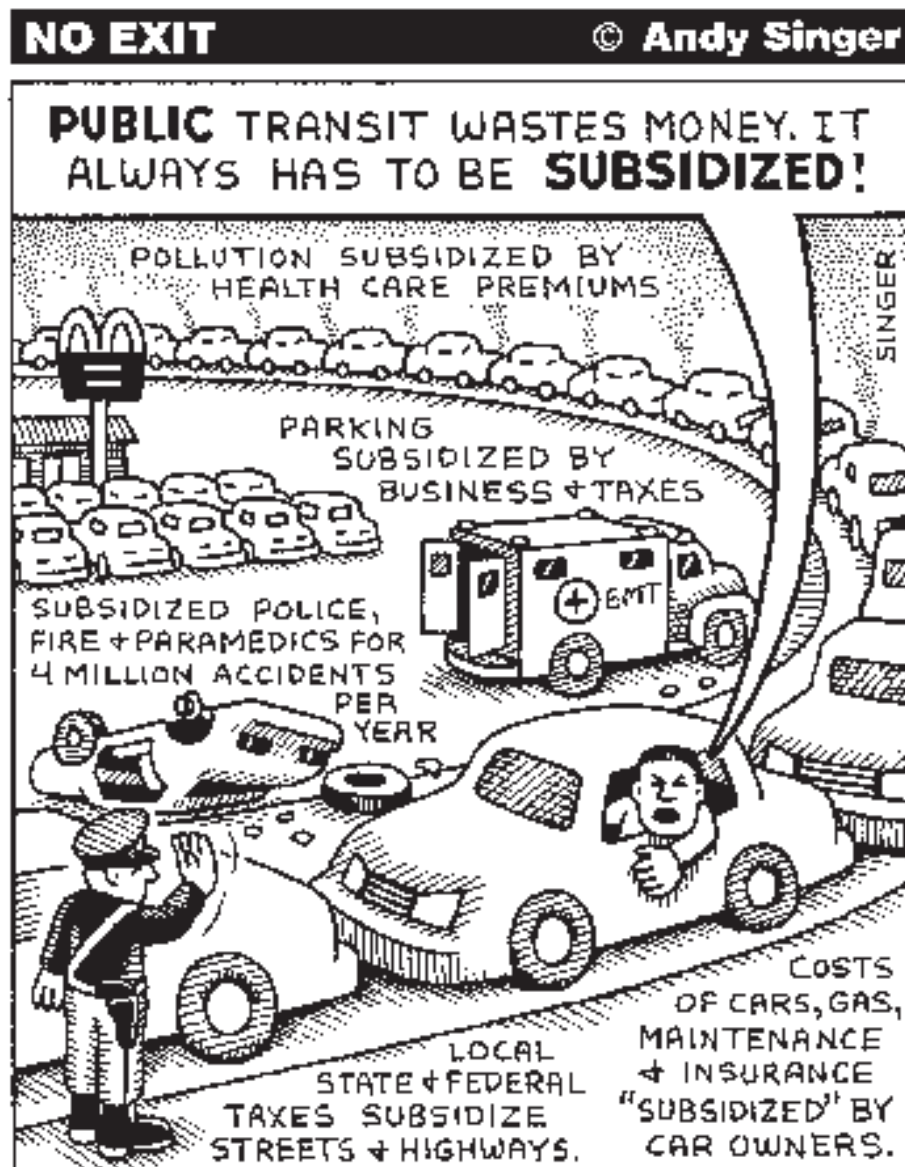
About 9% of Chico's population (that includes college students) already uses bicycles for part of their travel. Butte County has many people who are low on the earning scale and a graying population, two groups who tend to need/want "alternative" transportation. Chico is flat with a mild climate making it especially attractive for walking and bicycling. So many people in Chico would probably support a balanced system.

### WHAT CAN I DO ABOUT IT?

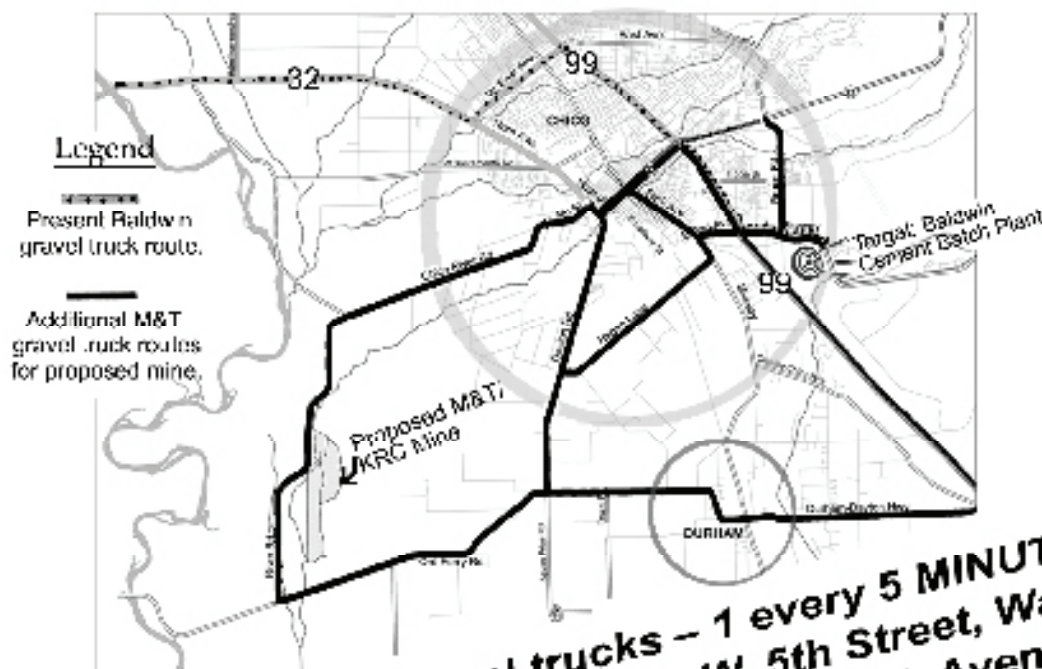
Call, write or email your city council members and let them know you want

TDA funds spent on improving transit, bicycle and pedestrian transportation. Email city council at <http://www.chico.ca.us>.

If you are interested in advocating for transportation equity, please consider joining the BEC committee by contacting contact me. Our local politicians and transportation planners need to know that you care what happens and are paying attention to decisions that are being made. Let's ask them to walk the talk. Email me at [djmac1010@sbcglobal.net](mailto:djmac1010@sbcglobal.net).



# A GRAVEL MINE ON RIVER ROAD? BAD IDEA!



*"You have heard over the years that Baldwin can get their rocks somewhere else. This statement is more than 100% true. This statement is fact....*

*And we have the reserves and planned reserves in Glenn County that will make this option a viable one for decades."* – R. J. Vercruyssen, Official Transcript, Planning Commission meeting, 1/25/2007.



**THOUSANDS of gravel trucks – 1 every 5 MINUTES! –**  
On River Rd., Chico River Rd., W. 5th Street, Walnut;  
8th & 9th Streets; Park Avenue & E. Park Avenue;  
Durham-Dayton, Hegan Lane and the Midway –  
9 or 10 hours a day for 30 years! **For What?!**

**STOP!  
ACT  
NOW!**

- We don't need it!
- Can't afford it!
- Imagine the pollution, safety hazards, and traffic nightmares!

**ATTEND THE HEARING**  
**January 8, 2008, 1:30 p.m.**

Supervisors Chambers  
25 County Center Drive,  
Oroville

*Call or  
write your  
Supervisors*

BConnelly@buttecounty.net	538-6834
JDolan@buttecounty.net	891-2830
MKirk@buttecounty.net	891-2800
CJosiassen@buttecounty.net	882-4447
KYamaguchi@buttecounty.net	872-6303

**PROTECT OUR CHILDREN, OUR TOWNS, OUR FARMLAND!**



**Proposed gravel truck route – School crosswalk, Durham.**



# RECYCLING

See businesses below by number	1	2	3	4	5	6	7	8	9	10	11	12	13	14	15	16	17	18	19	20
CRV	\$	\$	◆	\$	◆	\$	\$		◆	\$	\$		◆	\$		◆	\$	\$	◆	\$
Glass		\$	◆	\$	◆	\$	◆			◆	\$		◆	◆		◆	◆		◆	
Metal																				
Bi-metal cans		\$	◆			◆	◆			◆			◆	◆		◆	◆		◆	
Tin cans		\$				◆	◆			◆			◆	◆		◆	◆		◆	
Aluminum foil/ pie pans			◆				\$			◆										
Scrap metals		\$		\$		\$					\$	F								
Plastics														◆						
#1 Plastic		\$	◆	◆	◆		\$		◆	◆	\$		◆	◆		◆	◆		◆	
#2 Plastic		\$	◆		◆		\$			◆	\$		◆	◆		◆	◆		◆	
#3-7 Plastic		\$	◆				◆			◆	\$		◆	◆		◆	◆			
Paper																				
Newspaper			◆		◆	◆	\$			◆			◆	◆		◆	◆		◆	
Magazines			◆				◆			◆			◆	◆			◆		◆	
Phone books			◆				◆			◆			◆	◆			◆		◆	
Cardboard			◆		◆	◆	\$			◆			◆	◆			◆		◆	◆
Mixed paper			◆				\$			◆			◆	◆			◆		◆	
Ledger paper			◆				\$			◆			◆	◆			◆		◆	
Hazardous Waste																				
Alkaline batteries			◆					◆	◆					◆						
Car batteries		\$				\$	◆	◆			\$	◆		◆						
Paint								◆						◆	◆					
Pesticides								◆						◆						
Fluorescent lights & ballasts							\$	◆						◆						
Used motor oil							\$	◆				◆		◆	◆		\$			
Anti-freeze								◆						◆	◆					
Miscellaneous																				
Appliances (no freon)		◆				F						F								
Appliances (with freon)												F		F						
Cars														F						
Yard waste							◆					◆	◆							
Ewaste								◆				◆		◆	◆		◆			

u Accepts recyclables listed  
\$ Cash paid for recyclables listed  
F Fee charged to accept recyclables listed

- 1) 20/20 Recycling Centers**  
California Department of Conservation  
Albertson's, 1050 Oroville Dam Blvd., Oroville  
Albertson's, 146 W. East Ave., Chico  
Safeway, 1596 Hwy 99, Gridley  
Safeway, 1016 W. Sacramento Ave., Chico  
Safeway, 690 Mangrove Ave., Chico  
Safeway, 1366 East Ave., Chico  
Safeway, 6020 Clark Rd., Paradise  
T-F 11-5, Sa 8:30-5, closed 1:30-2
- 2) Aldred Scrap Metals/Steel Mill Recyclers**  
786 Oroville-Chico Hwy, Durham, 342-4930  
M-F 8-5
- 3) AS Chico Recycling Donation Center**  
417 Cherry St., Chico, 898-5033  
Sa 10-2:30, [www.csuchico.edu/as/recycle](http://www.csuchico.edu/as/recycle)
- 4) Berry Creek Rental & Recycle**

- 10 Menzie Lane, Berry Creek, 589-4828, Tu-Su 9-6
- 5) California Vocations (C.O.V.E.)**  
Curbside recycling in Magalia, Paradise,  
Paradise Pines, west side of Skyway to Nimshu  
877-0937, M-F 8-4
- 6) Chico Scrap Metals, Chico Scrap Metal South & Nor-Cal Recyclers**  
Auto bodies (call first), 878 E. 20th St., Chico,  
343-7166, M-F 8-12, 1-4, Sa 8-12; 766 Oroville-Chico  
Hwy., Durham, 345-6241, M-F 8-4  
1855 Kusel Rd., Oroville, 532-0262  
M 8-4, Tu-F 9-4, Sa 8-12
- 7) Chico Transfer & Recycling**  
2569 Scott Ave., Chico, 893-0333, M-F 8-4, closed 12-1 for  
lunch. [www.northvalleydisposal.com](http://www.northvalleydisposal.com)
- 8) Butte Co. Household Hazardous Waste**  
Collection Facility /AC Industrial Services  
1101 Marauder St. (at Chico Airport) 343-5488, Fri-Sat. 9-1  
Free to Butte County residents.
- 9) Country Roads Disposal**  
Curbside recycling in Bangor, Berry Creek, Feather Falls &  
Palermo, 589-3680, M-F 8-5

- 10) Fair St. Recycling-Work Training Center**  
2300 Fair Street, Chico, 343-8641  
M-F 9-4, Sat. 9-3:30, [www.wtcinc.org/fsr.htm](http://www.wtcinc.org/fsr.htm)
- 11) Joe Verni Recycling**  
4980 Lincoln Blvd., Oroville, 534-7402  
M-F 9-3:30, Sa 9-1
- 12) Neal Road Landfill**  
345-4917, Daily 7-4, [www.northvalleydisposal.com](http://www.northvalleydisposal.com)
- 13) NorCal Waste Curbside Recycling** 342-4444
- 14) NorCal Waste Oroville Recycling Center & Household Hazardous Waste**  
2720 S. 5th Ave., Oroville, 533-5868; Recycling Center  
M-Sa 8:30-3:30; Hazardous Waste F 1-6  
Free to City of Oroville residents.
- 15) Ord Ranch Transfer Station & Gridley Household Hazardous Waste Recycling**  
Ord Ranch Road, Gridley, 846-0810; Transfer Station  
Sa-Su 9-4; Hazardous Waste 2nd Sunday of month, Gridley  
residents only 9-4
- 16) Paradise Elementary School**  
588 Pearson Rd., Paradise; Drop boxes open 24 hrs.
- 17) Recycle Paradise**

- 951 American Way, Paradise  
Holiday Mkt, 14001 Lakeridge Cir., Magalia  
(CRV, newspapers only); Stratton's Mkt.  
5760 Sawmill Rd., Paradise (CRV, newspapers  
only) 877-2777, M-Sat 10-4
- 18) TOMRA Pacific**  
Collins & Denny Mkt, 434 Plumas Ave., Oroville  
Raley's Supermarket, 2325 Myers St., Oroville  
(916) 381-6861, Tu-Sa 9:30-5, closed 1-1:30
- 19) Waste Management-North Valley Disposal**  
Curbside recycling in Chico (893-4777), Biggs, Durham  
(by Appt), & Gridley (846-0810)  
[www.northvalleydisposal.com](http://www.northvalleydisposal.com)
- 20) Westside Recycling & Wood Products**  
2669 Hwy. 32, Chico, 892-2262, M-Sa 10-6, Su 10-4
- 21) Earthworm Soil Factory**  
704 Neal Rd., 895-9676 (accepts yard waste)

**ADDITIONAL RESOURCES:**  
[www.recyclebutte.net](http://www.recyclebutte.net)

# ENVIRONMENTAL CALENDAR

## Friday, November 9 -- BEC Birthday and Annual Meeting

Sierra Nevada Brewery

On Friday, November 9, 2007 BEC members and friends will gather to celebrate BEC's 32nd anniversary and membership meeting at the Sierra Nevada Brewery, 1075 East 20th Street, Chico. Dinner will be catered by the marvelous Sierra Nevada kitchen and the meeting will follow\*. The dinner is \$35 (low income tickets are also available) with a no host bar. Plan to arrive at 6 p.m. for socializing and a sip of the Brewery's finest! Reservations required. Call BEC at 891-6424 to purchase tickets or click on the

link in "for more info," to pay via paypal online. <http://www.becnet.org/nodes/events/birthdays/32nd.htm>

## Saturday, November 10 -- Chico Certified Farmer's Market

Every Saturday Year-Round. 2nd & Wall, Downtown Chico  
7:30am-1:00pm, Rain or Shine. To learn more about this event <http://www.northvalley.net/farmersmarket/>

## Saturday, November 10-- Butte Creek Ecological Preserve

Altacal Audubon

Butte Creek Ecological Preserve is a

wonderful slice of creek frontage saved from development by California State University, Chico. The recovering habitat was seriously degraded by years of dredger and gravel mining but now up to 50 species of birds may be found there on a good day. In early November we will be seeing recent fall migrants settling in for the winter and numerous other resident birds typical of foothill riparian habitat.

We'll meet at the Hwy 32 Park 'n Ride (the lot nearest Hwy 99) at 8 a.m. and carpool to the preserve. Wear warm clothes and gloves. Rain will cancel this trip. Bring binoculars or call Scott to arrange to borrow some. Three to four hours will give us time to thoroughly explore the preserve at a leisurely pace and the walking is easy on sometimes rocky trails. For more information please call Scott Huber at 321-5579.

## Saturday, November 10 -- Sacramento River Preservation Trust Float / AS Adventure Outings

8am-5pm, Mill Creek to Woodson Bridge (Tehama County). All floats are in river rafts. Cost is \$35 for members, \$45 for non-members, including transportation from Chico. For more info: Reservations required, call 345-1865 <http://www.sacriverttrust.org>

## Saturday, November 10 -- Eco Chico Bicycle Tour

TIME: 9am -- 1pm Location: Rain or Shine, Starting at the City Plaza and Ending at Sierra Nevada Brewery

Geography Planning students have organized a bicycle tour to showcase best practices in sustainability and green innovation in the Chico area. Stops will include CSU, Chico campus, The Cause, Westside Green, G.R.U.B. gardens, Chico Housing Improvement Program housing (CHIP), Norton Construction Eco House and Sierra Nevada Brewery. Refreshments will be provided. Be sure and bring a water bottle. For more information and registration forms visit the web site or contact Dr. LaDona Knigge at [lknigge@csuchico.edu](mailto:lknigge@csuchico.edu).

## Saturday, November 10 -- Compost Workshop

Time: 11:00am - noon

Each fall and spring, residents can learn

the basics of backyard composting. These fun, interactive, and fact-filled workshops are open to all ages. Please bring a water bottle, gardening gloves, tennis shoes and a big smile! Compost is the best kind of recycling you can do! Where: compost display area behind tennis courts. For more info contact: 898.5033.

## Tuesday, November 13, 2007 -- Smart Energy Management in Agriculture

St. Anthony's Parish, Winters, CA Smart Energy Management in Agriculture is coming to the Sacramento Valley! Farmers, dairies, ranchers, and wineries tired of high energy costs can learn to save money through energy efficiency and renewable energy sources. Learn about updates on the latest incentives and financing options, meet renewable energy consultants and farmers who are doing innovative projects in the region and see success first-hand on farm tours. A full day, including lunch, comprehensive training materials and farm tours. Space is limited. To reserve call the Ecological Farming Association at 831.763.2111 x4, or visit [www.eco-farm.org/energy](http://www.eco-farm.org/energy).

## Wednesday, November 14 -- Tofurkey Feast

TIME: 12:00 PM Location: 12pm - 2pm. Selvester's Café.

Bring a cup, plate and enjoy a free meatless meal on campus brought to you by EARC and AS Environmental Affairs Council. For more information contact EARC at (530) 898-5676.

## Thursday November 15 --Volunteer Thursdays in the Park

Friends of Bidwell Park: Remove invasive plants, plant native plants & remove litter. Meet at the Sycamore baseball field parking lot. For more information, call the volunteer coordinator, Lise-Smith-Peters, at 896-7831.

Trail Days in Upper Park Community volunteers will help provide trail repair and maintenance on Upper Park trails. The workday will last from 9 am until noon or longer for volunteers who wish to continue. Volunteers should wear sturdy shoes, weather-appropriate clothing, a hat and bring snacks and drinking water. Tools will be provided. Sponsored by the Chico Park

## Help Row the BEC Boat!

The local environment needs your contribution!

You can make a difference. If you can volunteer your time (no matter how little) and/or have a special skill to share, please fill out the coupon below. Thank you!

**Mail this form to:** BEC, 116 W. Second St., #3 Chico, CA 95928

Name

Address

City & Zip

Telephone

Email

Times that are usually most convenient for me to volunteer:

☐ Weekday mornings ☐ Weekday afternoons

☐ Weekday evenings ☐ Weekends

I am interested in helping with the following activities (please check all that apply):

☐ Artwork (graphic art, illustrations, etc.)

☐ Various Creek Cleanups

☐ Annual Endangered Species Fair

☐ Publicity

☐ Soliciting sponsors/donations

☐ Booth construction & set-up (the day before the Faire)

☐ Clean-Up

☐ *Environmental News*, BEC's quarterly newspaper

☐ Fundraising

☐ Office work

☐ Mailings

☐ News clippings (cutting & filing)

☐ Phones

☐ Research

☐ Photography (taking photos of our events and activities; nature photography)

☐ Writing letters to elected officials and regulatory agencies



Division. For more information, call the volunteer coordinator, Lise-Smith-Peters, at 896-7831.

## **Thursday November 15 –America Recycles Day**

Celebrating its 10th year, America Recycles Day is a nationally recognized day dedicated to promoting the social, environmental and economic benefits of recycling and encourage more people to join the movement toward creating a better natural environment. [www.americarecyclesday.org](http://www.americarecyclesday.org)

## **Saturday, November 17 –**

Friends of Bidwell Park: National Family Volunteer Day in Bidwell Park from 10 am to 1 pm. Volunteers will work on several projects: 1. Habitat restoration in the One Mile Recreation Area, removing invasive plants, weeding around young oak trees and picking up trash. Meet at the Sycamore baseball field parking lot 2. Trail maintenance in Upper Park. Meet at Parking Area B. Tools will be provided. Sponsored by the Chico Park Division. For more information, call the volunteer coordinator, Lise-Smith-Peters, at 896-7831.

Bidwell Park South Side Hike Start at the green gate on Hwy 32 and hike one way downhill for 6-7 miles to Five Mile, followed by a short car shuttle. Bring lunch, water, \$ for drivers and sturdy shoes. Rain cancels. Meet at 8:30 am at the Chico Park & Ride. For more information, call Alan at 891-8789.

## **Sunday, November 18 – Black Butte Lake**

Altacal Audubon: We will bird around the lake, hike the Big Oak Nature Trail, then drive up to the dam. Bring a picnic lunch and your binoculars. Dress warm, in layers, and wear sturdy shoes as there will be some hiking. The trip will end about 2 p.m. Rain cancels. Meet at Burger King in Orland (I 5 and Hwy. 32) at 9:00 a.m. Call Anne-Lise at 865-5254 for more information.

## **Thursday, November 22 - Cross Country Ski and Snowshoe (grade 1, class A)**

Sierra Club Yahi Group: Ski or snowshoe followed by Thanksgiving Dinner at the Mineral Lodge. If there isn't enough snow

cover we'll take an easy hike. Meet at Chico Park & Ride at 8:30AM. Turkey dinner in Mineral 1:30PM and return to Chico around 4:30-5PM. Cost: \$18 for dinner, plus \$ for drivers. Reservations required. Call Larry, 342-7998 for more info. Thursday,

## **Thursday, November 22 -- Run for Food**

2nd Annual Thanksgiving Day 5K run/walk in Lower Bidwell Park, starting at 9 am. Fundraising event to support the programs and services of the Jesus Center. Registration fee of \$25 for adults and \$15 for bibbed and timed children, if registered before Nov 6th (\$30 & \$20 if later). Children 12 and under must be accompanied by an adult & are free if untimed. For more information or to register online, see [www.runforfood.com](http://www.runforfood.com). Entry forms also available at Fleet Feet (222 W. 3rd St.) and at the Jesus Center (1297 Park Ave.).

## **Sunday, November 25 - Gray Lodge Wildlife Area**

Altacal Audubon: This will sure to be a popular field trip when we travel down to Gray Lodge Wildlife Refuge for the breathtaking event called the "Fly-Out". At dusk you'll witness thousands of ducks and geese rise from the ponds around Gray Lodge and fly to nearby fields to feed during the night. As the skies fill with birds, the sound of their wing beats and calls is incredible and something you won't want to miss. For more information please contact field trip leader Jennifer Patten at 345-9356 or [jpchico@sbcglobal.net](mailto:jpchico@sbcglobal.net)

## **Saturday, December 1 – Raptor Run**

Altacal Audubon: Meet at the Chico Park 'n Ride on Rt. 32 (the lot nearest the freeway) at 8 a.m. We'll look for raptors in the Cottonwood Rd. and Nelson Ave. areas. Targets are Bald Eagle, Ferruginous Hawk, Rough-legged Hawk, Prairie Falcon, Merlin, and Burrowing Owl as well as more commonly seen species. Bring binoculars (and scope if you have one) water, and a lunch. We should be back around 1 p.m. For questions, contact Jackson Shedd at: [jackson\\_shedd@sbcglobal.net](mailto:jackson_shedd@sbcglobal.net). Rain cancels.

## **Saturday, December 1 - Cross Country Ski (grade 2, class A).**

Sierra Club Yahi Group: We'll go where the

snow is good. This is for people who own ski equipment. Bring ski gear, lunch, water, appropriate clothing and \$ for drivers. Call leader for meeting time and place. Leader: Larry, 342-7998.

## **December 4-6: Riparian Habitat Joint Venture Conference**

River Partners: Integrating Riparian Habitat Conservation & Flood Management in California. The Radisson Hotel, in Sacramento, California. River Partner's science staff will present several papers and posters to their professional peers, highlighting our successes in designing and implementing restoration projects.

## **Saturday, December 8 - Sacramento National Wildlife Refuge**

Altacal Audubon: Meet at the refuge south of Willows at 8:45 a.m. Bring a picnic lunch. This is a great time to see wintering waterfowl and many other birds. Dress warm and wear shoes for walking on the nature trails. After the nature walk, we'll drive the auto-tour route, with a stop for lunch at the viewing platform. The birding trip will be over about 2 p.m. There is a \$3 entrance fee per car. Heavy rain cancels. For more information call Anne-Lise at 865-5254.

## **Sunday, December 16, - Chico Christmas Bird Count**

All levels of birders are welcome to join us on the Chico Christmas bird count. Beginners will be paired up with experienced birders. Bring warm clothes, hiking shoes, lunch, bird books and binoculars. You will be assigned an area and spend the day counting all of the birds in this area. If anyone is interested in doing just a half day, please let the compiler, Phil Johnson, (530-570-7139) know ahead of time so arrangements can be made for the day's assignments. We will meet at 7:30 a.m. at the Chico Creek Nature Center. At 5:00 p.m. we will meet at Scott and Nina Campbell's place for compilation of results. For possibly updated information, check the Altacal web site at [www.altacal.org](http://www.altacal.org)

## **Saturday, December 29 - Oroville**

Christmas Bird Count. All levels of birders are welcome to join us on the Oroville Christmas bird count. Beginners will be paired up with experienced birders. Bring

warm clothes, hiking shoes, lunch, bird books and binoculars. You will be assigned an area and spend the day counting all of the birds in this area. If anyone is interested in doing just a half day, please let the compiler, Phil Johnson, (530-570-7139) know ahead of time so arrangements can be made for the day's assignments. We will meet at 7:30 a.m. at the Agricultural Commissioner's Office on Nelson Rd. just east of Highway 70. At 5:00 p.m. there will be an optional dinner and compilation at a local restaurant. For possibly updated information, check the Altacal web site at [www.altacal.org](http://www.altacal.org) Tuesday, January 1, 2008 -- Annual polar bear swim across Lower Bidwell Park's Sycamore Pool starting at 1 pm. This is a no-host event--you just show up at the appropriate time.

## **Tuesday, January , 2008 -- New Year's Day**

Upper Bidwell Park Banana Belt Hike to view early spring flowers and the last of the fall flowers. Sponsored by the California Native Plant Society Mt. Lassen Chapter. Meet at 10 am at Parking Area E. Bring lunch and water.

## **Friday – Sunday, January 25-27, 2008: The 9th Annual Snow Goose Festival.**

Sacramento River Preservation Trust: Chico Masonic Family Center. For more info: [www.snowgoosefestival.org](http://www.snowgoosefestival.org) Join us for the 9th Annual Snow Goose Festival all weekend long. Field trips, workshops, exhibits, fun and free events for the kids. Our Gathering of Wings Banquet & Silent Auction will be held Saturday, January 26 in the BMU Auditorium of CSU, Chico. Come and be enlightened by internationally known author, birder and photographer, Kenn Kaufman. Visit the website for all the details. We look forward to seeing you there!

# ENVIRONMENTAL DIRECTORY

## **A.S. Recycling Program**

BMU 005, CSU Chico, Chico 95929  
Drop off center: 417 Cherry St., Chico  
530/898-5033 fax: 530/898-4978  
[www.aschico.com/recycle](http://www.aschico.com/recycle)

## **A.S. Environmental Affairs Council**

BMU 212, CSU Chico  
Chico, CA 95929-0750  
530/898-5701 fax: 530/898-6014  
[www.csuchico.edu/eac](http://www.csuchico.edu/eac)  
[asenvironmental@csuchico.edu](mailto:asenvironmental@csuchico.edu)

## **Altacal Audubon Society**

PO Box 3671, Chico, CA 95927  
530/824-0253  
[www.altacal.org](http://www.altacal.org); [Jacksons3@aol.com](mailto:Jacksons3@aol.com)

## **American Lung Association**

10 Landing Circle, Suite #1  
Chico, CA 95926  
530/345-5864 fax: 530/345-6035  
[www.lungusa.org/superiorbranch/index.html](http://www.lungusa.org/superiorbranch/index.html); [patty@alacsb.org](mailto:patty@alacsb.org)

## **Arboretum Management Club, CSUC**

Big Chico Creek Restoration  
First & Normal Streets  
Chico, CA 95929  
530/345-4542  
[www.csuchico.edu/amc](http://www.csuchico.edu/amc)  
[mikiel@ecst.csuchico.edu](mailto:mikiel@ecst.csuchico.edu)

## **Bidwell Environmental Institute**

CSU Chico  
Chico, CA 95929-0555  
530/898-6317 fax: 530/898-4363  
[www.csuchico.edu/bei](http://www.csuchico.edu/bei)  
[rlederer@csuchico.edu](mailto:rlederer@csuchico.edu)

**CSU Chico launches new sustainable future website.**

**Go to [www.csuchico.edu/sustainablefuture](http://www.csuchico.edu/sustainablefuture)**

## **Bidwell Park Fund**

PO Box 3223, Chico, CA 95927-3223  
530/345-7265  
[ptombarrett@sbcglobal.net](mailto:ptombarrett@sbcglobal.net)

## **Bidwell Wildlife Rehabilitation Center**

PO Box 4005, Chico, CA 95927  
530/343-9004 (Wildlife Help Phone)

## **Big Chico Creek Watershed Alliance**

PO Box 461, Chico, CA 95927  
530/894-1308; [www.bigchicocreek.org](http://www.bigchicocreek.org)  
[coordinator@bigchicocreek.org](mailto:coordinator@bigchicocreek.org)  
Susan Strachan, Chair

## **Butte Creek Watershed Conservancy**

PO Box 1611, Chico, CA 95927  
530/893-5399  
[www.buttecreekwatershed.org](http://www.buttecreekwatershed.org)  
[creek@inreach.com](mailto:creek@inreach.com)  
Chuck Kutz

## **Butte Environmental Council, Inc.**

116 W. 2nd St. #3, Chico, CA 95928  
530/891-6424 fax: 530/891-6426  
[www.becnet.org](http://www.becnet.org), [staff@becnet.org](mailto:staff@becnet.org)

## **Butte Humane Society**

2579 Fair St., Chico, CA 95928  
530/343-7917 fax: 530/343-3734  
[www.buttehumane.org](http://www.buttehumane.org)  
[shelter@buttehumane.org](mailto:shelter@buttehumane.org)

## **California Bat Conservancy**

530.642.2731  
[californiabats@savebats.org](mailto:californiabats@savebats.org)  
[inquiry@savebats.org](mailto:inquiry@savebats.org)  
[www.savebats.org](http://www.savebats.org)

## **California Conservation Corps**

2345 Fair St., Chico, CA 95928  
530/895-4336 pager: 916/592-6500  
[www.ccc.ca.gov](http://www.ccc.ca.gov)

## **California Native Plant Society**

2707 K Street, Suite 1  
Sacramento, CA 95816  
916/447-2677; [cnps@cnps.org](mailto:cnps@cnps.org)  
[www.cnps.org](http://www.cnps.org)

## **California Native Plant Society, Mount Lassen Chapter**

PO Box 3212, Chico, CA 95927  
530/342-6053  
[woodyelliot@digitalpath.net](mailto:woodyelliot@digitalpath.net)

## **California Oak Foundation**

1212 Broadway, Suite 810  
Oakland, CA 94612  
510/763-0282; fax: 510/208-4435  
[www.californiaoaks.org](http://www.californiaoaks.org)  
[oakstaff@californiaoaks.org](mailto:oakstaff@californiaoaks.org)

## **California Sportfishing Protection Alliance**

[users.rcn.com/ccate/CSPAPagerev0.html](http://users.rcn.com/ccate/CSPAPagerev0.html); [cspace@psln.com](mailto:cspace@psln.com)  
510/526-4049

## **California Wilderness Coalition**

1212 Broadway, Suite 1700  
Oakland, CA 94612  
510/451-1450 fax: 510/451-1445  
[www.calwild.org](http://www.calwild.org); [info@calwild.org](mailto:info@calwild.org)

## **Cherokee Preservation Society**

530/534-0400; fax: 530/534-0400

## **Chico Certified Farmer's Market**

305 Wall St., Chico, CA 95928  
530/893-3276  
Terry Givens, Market Manager

## **Chico Creek Nature Center**

*In Bidwell Park*; 1968 E. 8th Street  
Chico, California 95928  
(530) 891-4671 fax: 530/891-0837  
[www.chico.com/naturecenter](http://www.chico.com/naturecenter)

## **Chico Avenues Neighborhood Association**

1627 Arcadian Ave.  
Chico, CA 95926  
530/343-8334; [www.theavenues.org](http://www.theavenues.org)  
[avenues@infostations.com](mailto:avenues@infostations.com)  
Kasey Merrill

## **Chico Tree Enhancement & Education Program**

PO Box 68, Forest Ranch, CA 95942  
530/895-0866; [streamrc@earthlink.net](mailto:streamrc@earthlink.net)

## **Chico Velo Cycling Club**

PO Box 2285, Chico, CA 95927-2285  
530/343-8356 fax: 530/342-4646  
800/482-2453; [www.chicovelo.org](http://www.chicovelo.org)  
[ed@chicovelo.org](mailto:ed@chicovelo.org)

## **Community Legal Information Center, CSUC**

Chico, CA 95926  
530/898-4354 x16 fax: 530/898-4911  
[www.csuchico.edu/clic/ea](http://www.csuchico.edu/clic/ea)  
[clic@csuchico.edu](mailto:clic@csuchico.edu)

## **Environmental Action & Resource Center**

418 Ivy St., Chico, CA 95928  
530/898-5676  
[www.csuchico.edu/earc](http://www.csuchico.edu/earc)  
[earc@csuchico.edu](mailto:earc@csuchico.edu)

## **The Esplanade League**

PO Box 4868  
Chico, CA 95927-4868  
[www.esplanadeleague.org](http://www.esplanadeleague.org)  
[eleague@shocking.com](mailto:eleague@shocking.com)

## **Farm Sanctuary**

PO Box 1065, Orland, CA 95963  
530/865-4617 fax: 530/865-4622  
[www.farmsanctuary.org](http://www.farmsanctuary.org)  
[west@farmsanctuary.org](mailto:west@farmsanctuary.org)

## **Friends of Bidwell Park**

PO Box 3036, Chico, CA 95927-3036  
530/892-1666  
[www.friendsofbidwellpark.org](http://www.friendsofbidwellpark.org)  
[info@friendsofbidwellpark.org](mailto:info@friendsofbidwellpark.org)



## **Friends of Butte Creek**

PO Box 3305  
Chico, CA 95927  
530/879-0887  
www.buttetecreek.org  
friends@buttetecreek.org

## **Friends of Plumas Wilderness**

PO Box 1749, Quincy, CA 95971-0207  
530/283-1230

## **Friends of the River**

915 20th Street  
Sacramento, CA 95814  
www.friendsoftheriver.org  
info@friendsoftheriver.org  
916/442-3155 fax: 916/442-3396

## **Habitat for Humanity**

3880 Benetar Way #1,  
Chico, CA 95928  
Mailing address: PO Box 3073  
Chico CA 95927  
530/895-1271 fax: 530/895-0432  
www.habitat.org

## **Humanity Rising**

PO Box 528, Chico, CA 95927  
530/899-7719  
jomaha@sunset.net

## **Kids & Creeks**

113 W. 19th Street, Chico, CA 95928  
www.kidsandcreeks.org  
roxannebaxter@sbcglobal.net

## **Lassen Forest Preservation Group**

1540 Vilas Road,  
Cohasset, CA 95973  
530/342-1641

## **Little Chico Creek Watershed Group**

Dept. of Biological Sciences, CSUC  
Chico, CA 95929-0515  
530/898-5684 fax: 530/898-4363  
jhubbell@csuchico.edu

## **Middle Mountain Foundation**

Sutter Buttes Naturalists  
PO Box 483, Live Oak, CA 95953  
530/634-6387  
www.middlemountain.org  
middlesmountain@yahoo.com

## **Mill Creek Conservancy**

PO Box 188, Los Molinos, CA 96055  
530/595-4470 fax: 530/595-4470  
milcrk1@aol.com

## **The Nature Conservancy, Northern Central Valley**

500 Main Street, Suite B  
Chico, CA 95928  
530/897-6370 fax: 530/342-0257

## **Neighbors for Environmental & Fiscal Responsibility**

2300 B Estes Road, Chico, CA 95928  
530/345-7590; mike4pax@aol.com

## **Northern California Regional Land Trust**

167 E. Third Ave., Chico, CA 95926  
530/894-7738 fax: 530/894-7738  
www.landconservation.org  
ncrlt@shocking.com

## **Plumas Forest Project**

PO Box 903, Blairsden, CA 96103  
530/836-0461; John Preschutti

## **Protect Our Watershed**

PO Box 1223, Paradise, CA 95967  
530/873-6383; cont103@aol.com

## **River Partners**

580 Vallombrosa Ave.  
Chico, CA 95926  
530/894-5401 ext 22,  
www.riverpartners.org  
info@riverpartners.org

## **Sacramento River Preservation Trust**

631 Flume St., Box 5366, Chico 95927  
530/345-1865 fax: 530/899-5105  
www.sacrivetrust.org  
jmerz@sacrivetrust.org

## **Sacramento River Watershed Program**

500 Orange Street  
Chico, CA 95928  
530/879-0887  
www.sacrivetrust.org

## **Sierra Club, Yahi Group**

PO Box 2012, Chico, CA 95927  
530/824-2588  
www.motherlode.sierraclub.org/yahi/

## **Sierra Nevada Forest Protection Campaign**

915 20th St., Sacramento, CA 95814  
916/442-3155 x206 fax: 916/442-3396  
Sierra\_Campaign@friendsoftheriver.org

## **South Bidwell Park Neighborhood Association**

P.O. Box 2057, Chico CA 95927  
530/879-5339, www.sbpnassoc.com  
sbpna00@yahoo.com

## **So. Campus Neighborhood Assn**

1405 West 3rd St., Chico, CA 95928  
898-2623, southcampusneighborhood.org

## **So. Chico Neighborhood Assn**

PO Box 3582, Chico, CA 95927  
dguzzetti@hotmail.com

## **The Bidwell Conservancy**

49 Forest Creek Cir.  
Chico, CA 95928; 530/345-7205

## **Streaminders**

Chapter of Izaak Walton League  
PO Box 68, Forest Ranch, CA 95942  
530/895-0866; streamrc@earthlink.net

## **TreeAction**

530/896-1168; www.treeaction.org  
laz@chiconet.com

## **Trout Unlimited**

848 Morninghome Ct.  
Chico, CA 95926; 530/893-3116  
ep10@mail.csuchico.edu  
or agroninja@yahoo.com

## **Valley Water Protection**

7399 Hwy. 99, Oroville, CA 95965  
530/343-0916 fax: 530/894-7829  
cofarm@shocking.com

## **Vallombrosa Ave. Neighborhood Assn.**

2096 Vallombrosa Ave. Chico, 95926

## **Young Life Woodleaf**

PO Box 397, Center Country School  
Challenge, CA 95925  
530/675-2252 fax: 530/675-0458  
www.woodleaf.yl.org  
Woodleaf@Woodleaf.YoungLife.Org

## **Donate Your Used Vehicles**

**To Butte Environmental Council!**  
**Running or not, and get a tax deduction...**

**Call toll free (have title with you)**

**(877) CARS-4-US Ext. 1865**

**Cars, boats, trucks, RVs, motorcycles, snowmobiles,  
vans, jet-skis, motor homes, and even buses.**

116 W. Second St., Suite 3  
Chico, CA 95928  
(530) 891-6424  
www.becnet.org

Return Service Requested

Non Profit  
Organization  
U.S. Postage PAID  
Permit No. 118  
Chico, CA 95928

# Are You A BEC Angel Yet?



Earn Your Wings Here!  
and a set of beautiful etched goblets—  
in time for the holidays

## BEC Membership

Keep BEC an independent voice for the local environment! Your membership gives you a voice for the land, air, and water you count on for your health, your soul, and future generations. Just 14 cents a day gives you a household membership. Please fill out the form below and to the right.

### Sign me up for a BEC membership!

- ☐ \$500    Cougar Cadre (Receives 4 tickets to the Environmental Banquet)
- ☐ \$150    Energy Elite                      ☐ \$35    Individual
- ☐ \$100    Wetlands Watch                    ☐ \$20    Low income
- ☐ \$50     Household

## Protect the North Valley's Land, Air, and Water

### BEC Angels

Join the BEC Angels who replace their annual membership donation with monthly or quarterly contributions.

They allow us to spend less time fundraising, and more time doing the advocacy, education and referrals that you want BEC to do.

You may pay by check, credit card, or electronic funds transfer and it is all tax deductible. **New or upgraded Angel members will receive a set of cobalt blue goblets etched with a special BEC emblem.**

#### Become a BEC Angel!

I would like to become a "BEC Angel" by pledging \$ \_\_\_\_\_ per ☐ month or ☐ quarter to BEC. Enclosed is my first payment.

#### Method of payment

- ☐ Electronic Funds Transfer now available. Call BEC at 891-6424 for details.
- ☐ Check, made payable to BEC.
- ☐ Credit card (circle one)    Visa    Mastercard    Amex    Discover

Credit Card No. \_\_\_\_\_  
Exp. \_\_\_\_\_

Signature \_\_\_\_\_

Name \_\_\_\_\_

Address \_\_\_\_\_

City & Zip \_\_\_\_\_

Telephone \_\_\_\_\_

Email \_\_\_\_\_

- ☐ Please don't share my name with other groups.
- ☐ I prefer not to be thanked in the *Membergram* for my donation.

Make checks payable to Butte Environmental Council. Mail this form to BEC, 116 W. Second Street., #3, Chico, CA 95928. Contributions to BEC are tax-deductible (less the cost of any premiums).